

Bronze Level

Question Paper 1

Level	IGCSE
Subject	Maths
Exam Board	Edexcel
Difficulty Level	Bronze
Booklet	Question Paper 1

Time Allowed: 60 minutes

Score: /50

Percentage: /100

Grade Boundaries:

9	8	7	6	5	4	3	2	1
>95%	85%	75%	65%	55%	45%	35%	25%	<25%

Save My Exams! - The Home of Revision

For more awesome GCSE and A level resources, visit us at www.savemyexams.co.uk/

- 1 (a) Use your calculator to work out the value of

$$\frac{24.1}{8.4 - 7.8} - 6.2^2$$

Write down all the figures on your calculator display.

.....
(2)

- (b) Give your answer to part (a) correct to 3 significant figures.

.....
(1)

(Total for Question 1 is 3 marks)

2

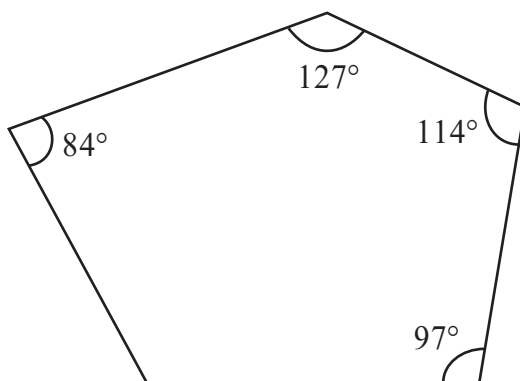


Diagram **NOT** accurately drawn

Four of the angles of a pentagon are 97° , 114° , 127° and 84° .

Work out the size of the fifth angle.

.....
o

(Total for Question 2 is 4 marks)

3 (a) Factorise $w^2 - 9w$.

.....
(2)

(b) Solve $5x - 1 = 2x - 7$

$x =$
(3)

(c) Expand and simplify $(y - 7)(y + 3)$.

.....
(2)

(Total for Question 3 is 7 marks)

Save My Exams! – The Home of Revision

For more awesome GCSE and A level resources, visit us at www.savemyexams.co.uk/

- 4 Every morning, Samath has one glass of fruit juice with his breakfast. He chooses at random orange juice or pineapple juice or mango juice. The probability that he chooses orange juice is 0.6
The probability that he chooses pineapple juice is 0.3

(a) Work out the probability that he chooses mango juice.

.....
(2)

(b) There are 30 days in April.

Work out an estimate for the number of days in April on which Samath chooses orange juice.

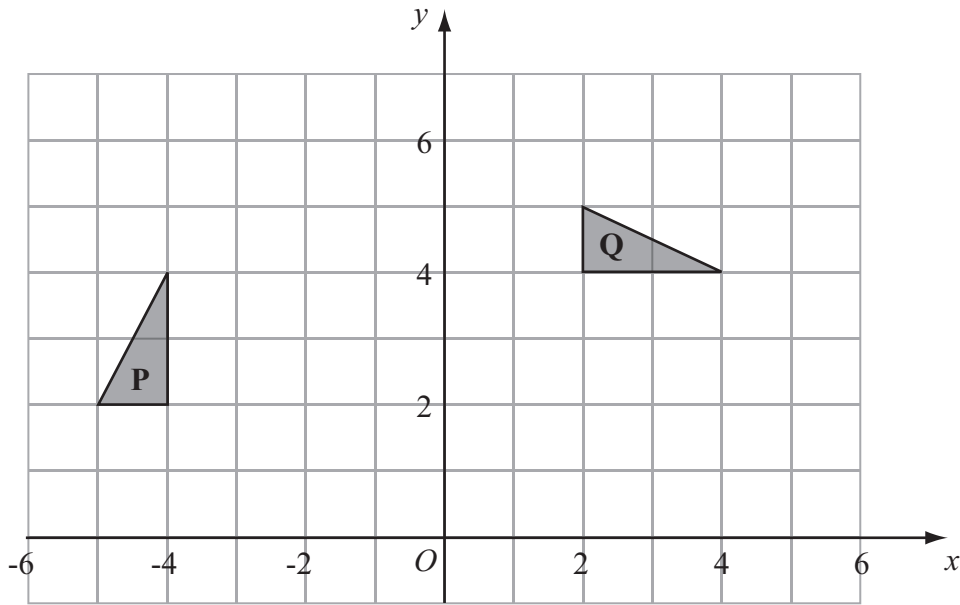
.....
(2)

(Total for Question 4 is 4 marks)

5 Show that $\frac{5}{6} - \frac{3}{4} = \frac{1}{12}$

(Total for Question 5 is 2 marks)

6



(a) Describe fully the single transformation which maps triangle **P** onto triangle **Q**.

.....
(3)

(b) Reflect triangle **Q** in the line $y = x$.

Label the new triangle **R**.

(2)

(Total for Question 6 is 5 marks)

7 The perimeter of a triangle is 90 cm.
The lengths of the sides of the triangle are in the ratios 3 : 5 : 7

Work out the length of the longest side of the triangle.

..... cm

(Total for Question 7 is 3 marks)

Save My Exams! - The Home of Revision

For more awesome GCSE and A level resources, visit us at www.savemyexams.co.uk/

- 8 $\mathcal{E} = \{2, 3, 4, 5, 6, 7, 8, 9, 10, 11, 12\}$
 $A = \{\text{odd numbers}\}$
 $P = \{\text{prime numbers}\}$

List the members of the set

(i) $A \cap P,$

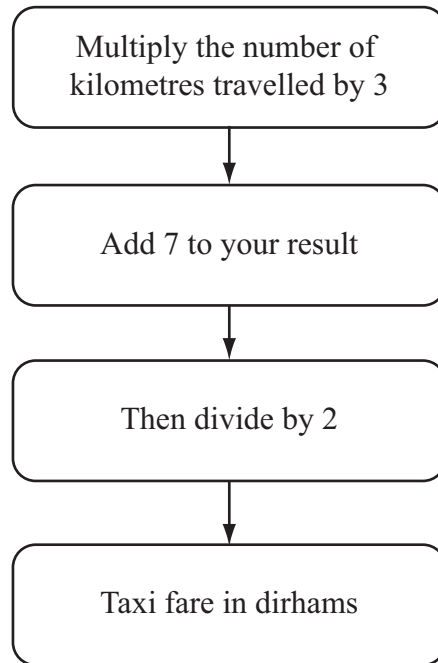
.....

(ii) $A \cup P.$

.....

(Total for Question 8 is 2 marks)

9 This rule can be used to work out the fare, in dirhams, for a taxi journey in Dubai.



Find a formula for the fare, C dirhams, for a taxi journey of d kilometres.

.....
(Total for Question 9 is 3 marks)

10

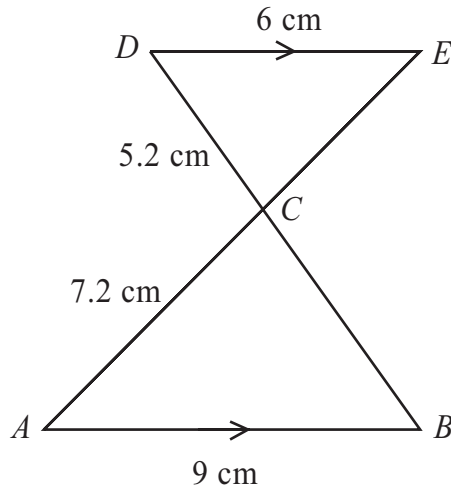


Diagram **NOT** accurately drawn

- AB is parallel to DE .
- ACE and BCD are straight lines.
- $AB = 9$ cm.
- $AC = 7.2$ cm.
- $CD = 5.2$ cm.
- $DE = 6$ cm.

(a) Calculate the length of BC .

..... cm
(2)

(b) Calculate the length of CE .

..... cm
(2)

(Total for Question 10 is 4 marks)

- 11** In a sale, normal prices are reduced by 15%.
The normal price of a television was \$640

Work out the sale price of the television.

\$

(Total for Question 11 is 3 marks)

- 12** John throws a biased coin 120 times.

It shows heads 90 times.

- (a) John throws the coin once more.

Work out an estimate for the probability that the coin shows **tails**.

.....
(2)

Carly throws the same coin 200 times.

- (b) Work out an estimate for the number of times the coin shows **tails**.

.....
(2)

(Total for Question 12 is 4 marks)

13 Here is a list of ingredients for making Apple and Raspberry Crumble for 6 people.

Apple and Raspberry Crumble

Ingredients for 6 people

120 grams	plain flour
230 grams	apples
200 grams	raspberries
160 grams	soft brown sugar
90 grams	butter

Sam wants to make Apple and Raspberry Crumble for 15 people.
She has enough plain flour, soft brown sugar and butter.

Work out the amount of apples and the amount of raspberries Sam needs.

apples grams

raspberries grams

(Total for Question 13 is 3 marks)

14 The length of Rachael’s journey from her home to work is 72 km.
The journey takes 1 hour 20 minutes.

Work out her average speed in km/h.

..... km/h

(Total for Question 14 is 3 marks)
