

# Cell Structure

## Question paper 2

<b>Level</b>	IGCSE(9-1)
<b>Subject</b>	Biology
<b>Exam Board</b>	Edexcel IGCSE
<b>Module</b>	Single Award (Paper 2B)
<b>Topic</b>	Structure and Functions in Living Organisms
<b>Sub-Topic</b>	Cell Structure
<b>Booklet</b>	Question paper 2

**Time Allowed:** 9 minutes

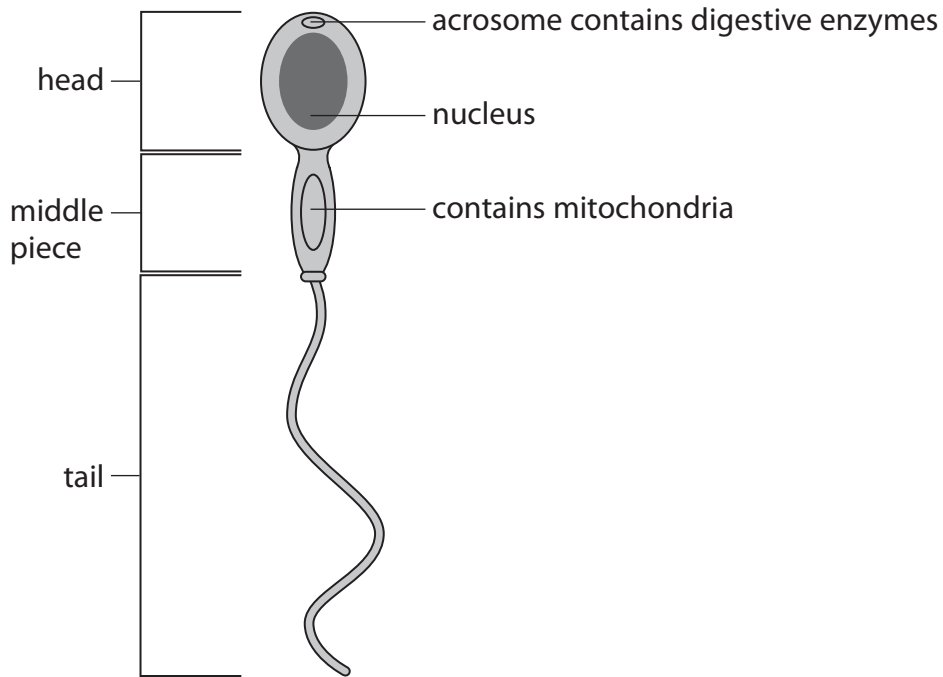
**Score:** /7

**Percentage:** /100

**Grade Boundaries:**

9	8	7	6	5	4	3	2	1
>90%	80%	70%	60%	50%	40%	30%	20%	10%

1 (a) The diagram shows a human sperm, which is a specialised cell.



Suggest the function of each of the sections of the sperm cell.

(i) head

(2)

.....

.....

.....

.....

(ii) middle piece

(2)

.....

.....

.....

.....

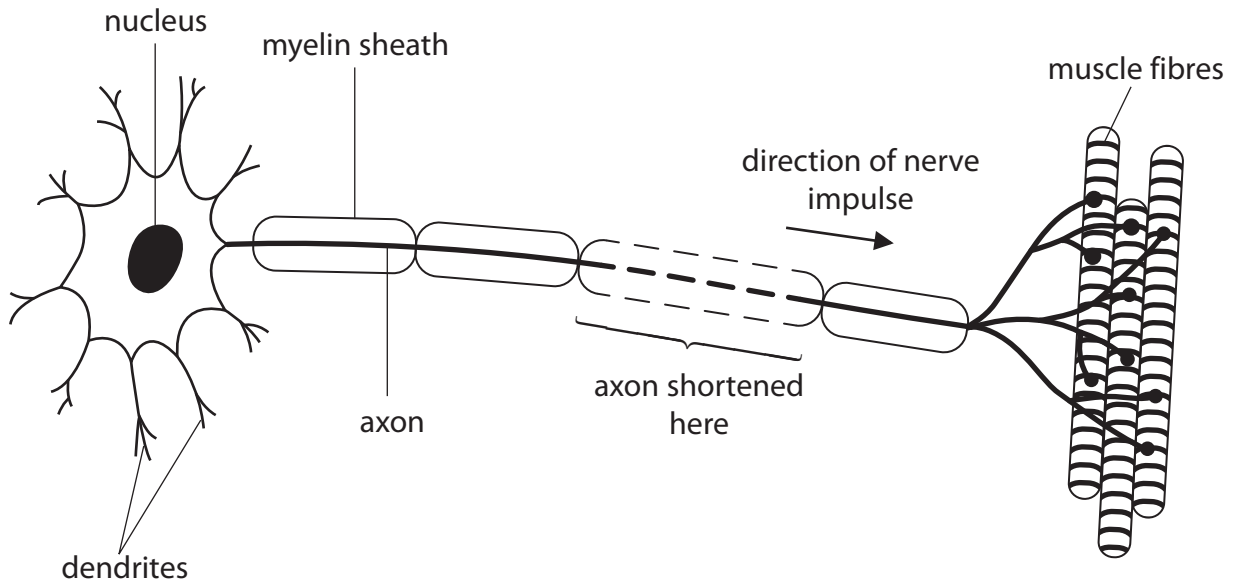
(iii) tail

(1)

.....

.....

(b) The diagram shows a motor neurone, which is another specialised human cell.



Suggest two ways in which the structure of the motor neurone is adapted for its function.

(2)

1 .....

.....

2 .....

.....

**(Total for Question = 7 marks)**