

Isotopes, Mass Spec & RAM/ RMM

Question Paper

Level	International A Level
Subject	Chemistry
Exam Board	Edexcel
Topic	The Core Principles of Chemistry
Sub Topic	Isotopes, Mass Spec & RAM/RMM
Booklet	Question Paper

Time Allowed: **59 minutes**

Score: **/49**

Percentage: **/100**

Grade Boundaries:

A*	A	B	C	D	E	U
>85%	'77.5%	70%	62.5%	57.5%	45%	<45%

- 1 Which row in the table shows the number of protons, neutrons and electrons in a fluoride ion, F⁻?

Use the Periodic Table as a source of data.

	Protons	Neutrons	Electrons
<input type="checkbox"/> A	8	9	9
<input type="checkbox"/> B	9	9	10
<input type="checkbox"/> C	9	10	9
<input type="checkbox"/> D	9	10	10

(Total for Question 1 = 1 mark)

- 2 A sample of oxygen contains the isotopes ¹⁶O, ¹⁷O, ¹⁸O.

How many peaks would there be for the O₂⁺ ions in the mass spectrum of this sample of oxygen?

- A 3
- B 5
- C 6
- D 9

(Total for Question 2 = 1 mark)

3 Ions are separated in the mass spectrometer by

- A a vacuum pump.
- B a magnetic field.
- C an ionization chamber.
- D electron bombardment.

(Total for Question 3 = 1 mark)

4 Which of the following contains one mole of neutrons?

- A 1 g of ${}^1_1\text{H}$
- B 1 g of ${}^{12}_6\text{C}$
- C 2 g of ${}^{24}_{12}\text{Mg}$
- D 2 g of ${}^{22}_{10}\text{Ne}$

(Total for Question 4 = 1 mark)

5 Which of the following species has 50 neutrons?

- A ${}^{50}_{23}\text{V}$
- B ${}^{86}_{37}\text{Rb}^{-}$
- C ${}^{89}_{39}\text{Y}^{+}$
- D ${}^{91}_{40}\text{Zr}^{+}$

(Total for Question 5 = 1 mark)

6 Which of the following statements is correct about **all** isotopes of an element? They have

- A the same mass number.
- B the same number of neutrons.
- C more protons than neutrons.
- D the same electronic configuration.

(Total for Question 6 = 1 mark)

7 The element rhenium has two naturally-occurring isotopes, ${}^{185}\text{Re}$ and ${}^{187}\text{Re}$. The relative atomic mass of rhenium is 186.2.

From this information, the percentage abundances of these two isotopes are

- A 12% ${}^{185}\text{Re}$ and 88% ${}^{187}\text{Re}$
- B 40% ${}^{185}\text{Re}$ and 60% ${}^{187}\text{Re}$
- C 60% ${}^{185}\text{Re}$ and 40% ${}^{187}\text{Re}$
- D 88% ${}^{185}\text{Re}$ and 12% ${}^{187}\text{Re}$

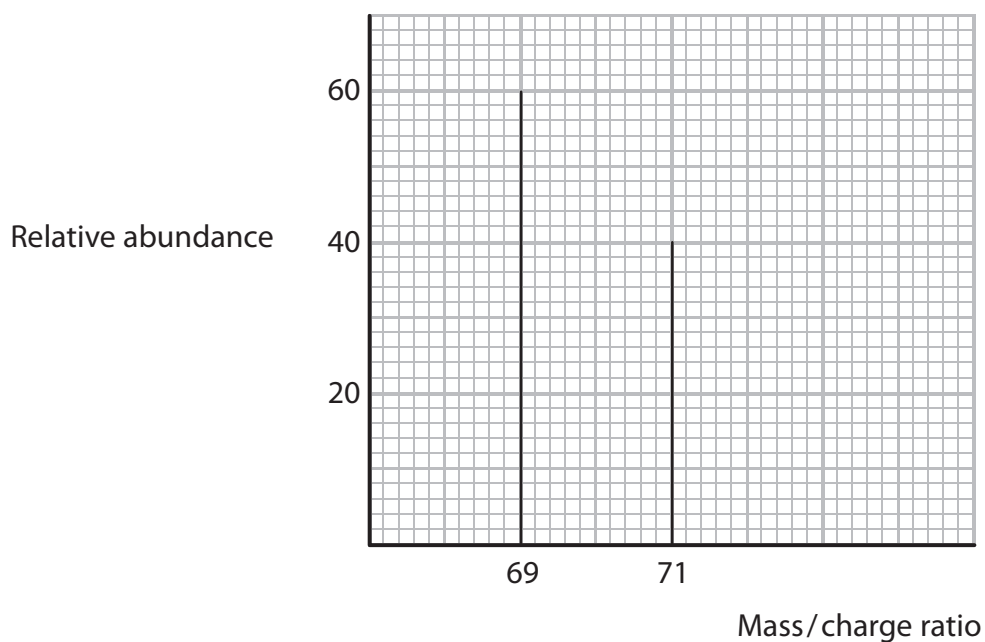
(Total for Question 7 = 1 mark)

8 Which of the following ions would be deflected **least** in a mass spectrometer?

- A $^{35}\text{Cl}^+$
- B $^{35}\text{Cl}^{2+}$
- C $^{37}\text{Cl}^+$
- D $^{37}\text{Cl}^{2+}$

(Total for Question 8 = 1 mark)

9 The mass spectrum of an element is shown below.



The relative atomic mass of the element is

- A 69.4
- B 69.8
- C 70.0
- D 70.2

(Total for Question 9 = 1 mark)

10 In a mass spectrometer, positive ions are accelerated by

- A** bombarding them with fast-moving electrons.
- B** bombarding them with fast-moving protons.
- C** passing them between charged plates.
- D** passing them through a magnetic field.

(Total for Question 10 = 1 mark)

11 This question is about isotopes, and the use of mass spectrometry to detect their presence and measure their abundance.

(a) Boron has two naturally occurring isotopes, ^{10}B and ^{11}B .

(i) A sample of boron contained 13.9% of isotope ^{10}B and 86.1% of isotope ^{11}B . Calculate the relative atomic mass of boron in this sample. Give your answer to **three** significant figures.

(2)

(ii) Complete the following definition of relative atomic mass.

(1)

The relative atomic mass is the weighted mean mass of an atom of an element

.....

.....

(iii) Boron-12 is a short-lived radioactive isotope.

Name the subatomic particles in an atom of boron-12 and give the number of each.

(2)

.....

.....

.....

- (b) (i) A mass spectrometer operates under a vacuum. Suggest the effect on the ions in a mass spectrometer if particles from the air were present.

(1)

.....

.....

- (ii) Suggest how, if at all, the electric field in the mass spectrometer would affect molecules that are **not** ionised.

(1)

.....

.....

- *(iii) The reaction of ethene with aqueous potassium manganate(VII), KMnO_4 , produces ethane-1,2-diol, $\text{CH}_2\text{OHCH}_2\text{OH}$.

Data: molar mass of ethane-1,2-diol = 62 g mol^{-1}

In an experiment, KMnO_4 containing only ^{18}O reacts with ethene. Suggest how the mass spectrum of ethane-1,2-diol data could be used to decide whether the oxygen atoms in ethane-1,2-diol came from the manganate(VII) ion, water, or a combination of the two.

(2)

.....

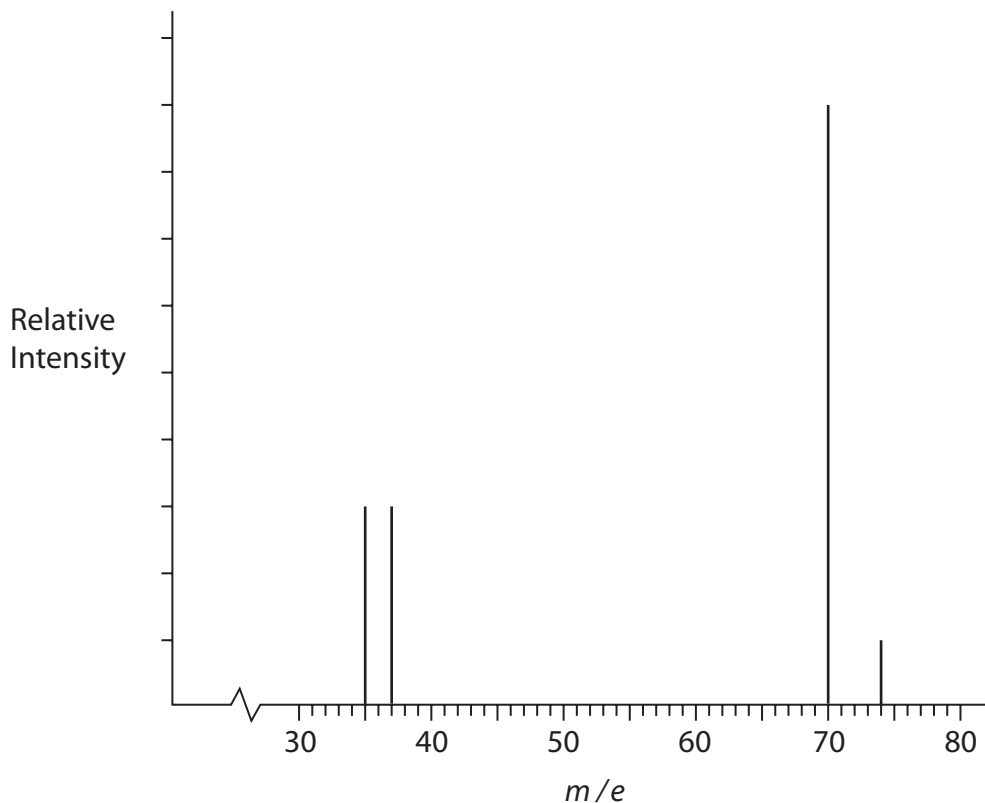
.....

.....

.....

.....

- (c) A student sketched the mass spectrum of chlorine gas which contained 75% of the ^{35}Cl isotope and 25% of the ^{37}Cl isotope.



- (i) Identify and correct the **two** errors made by the student in this sketch.

(2)

Error 1

Correction 1

Error 2

Correction 2

- (ii) Give the formula of the ion responsible for the peak with $m/e = 74$, showing the isotope(s) present.

(1)

.....

(Total for Question 11 = 12 marks)

12 (a) The relative atomic masses of elements can be determined using a mass spectrometer.

(i) Define the term **relative atomic mass**.

(3)

.....

.....

.....

.....

.....

.....

(ii) Describe fully how positive ions are formed from gaseous atoms in a mass spectrometer.

(2)

.....

.....

.....

.....

.....

.....

(iii) The following data were obtained from the mass spectrum of a sample of strontium.

Mass / charge ratio	% abundance
84.0	0.56
86.0	9.86
87.0	7.02
88.0	82.56

Calculate the relative atomic mass of strontium in this sample.

Give your answer to **three** significant figures.

(2)

(b) In which block of the Periodic Table is strontium found?

(1)

(c) Draw the dot and cross diagram for strontium chloride.

Show **outer** electrons only.

(2)

(d) A solution of strontium nitrate was prepared from strontium oxide and dilute nitric acid.

Write the equation for this reaction, including state symbols.

(2)

(e) A compound of strontium contains 49.9% strontium, 13.7% carbon and 36.4% oxygen, by mass.

Calculate the empirical formula for this compound.

[Use relative atomic masses: Sr = 87.6, C = 12.0, O = 16.0]

(3)

13 A model of the atom describes a nucleus containing protons and neutrons surrounded by electrons in energy levels.

(a) Complete the table below.

(3)

Sub-atomic particle	Relative mass	Relative charge
proton		
neutron		
electron		

(b) State, in terms of the sub-atomic particles present, the meaning of the term **isotopes**.

(2)

.....

.....

(c) The element rubidium exists as the isotopes ^{85}Rb and ^{87}Rb .

(i) Explain how gaseous atoms of rubidium are ionized in a mass spectrometer.

(2)

.....

.....

.....

.....

(ii) In a sample of rubidium, the isotope ^{85}Rb has an abundance 2.5 times greater than that of ^{87}Rb .

Calculate the relative atomic mass of rubidium in this sample. Give your answer to **one** decimal place.

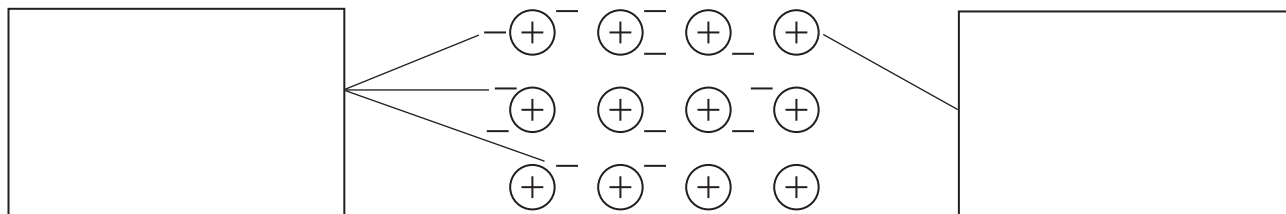
(3)

Relative atomic mass =

(d) The diagram below illustrates a model of the metallic bonding in rubidium.

Write appropriate labels in the two empty boxes in order to complete the diagram.

(2)



(Total for Question 13 = 12 marks)