

Thursday 24 May 2012 – Morning

**GCSE GATEWAY SCIENCE
CHEMISTRY B**

B741/02 Chemistry modules C1, C2, C3 (Higher Tier)

Candidates answer on the Question Paper.
A calculator may be used for this paper.

OCR supplied materials:
None

Other materials required:

- Pencil
- Ruler (cm/mm)

Duration: 1 hour 15 minutes



Candidate forename		Candidate surname	
-----------------------	--	----------------------	--

Centre number						Candidate number				
---------------	--	--	--	--	--	------------------	--	--	--	--

INSTRUCTIONS TO CANDIDATES

- Write your name, centre number and candidate number in the boxes above. Please write clearly and in capital letters.
- Use black ink. HB pencil may be used for graphs and diagrams only.
- Answer **all** the questions.
- Read each question carefully. Make sure you know what you have to do before starting your answer.
- Write your answer to each question in the space provided. Additional paper may be used if necessary but you must clearly show your candidate number, centre number and question number(s).
- Do **not** write in the bar codes.

INFORMATION FOR CANDIDATES

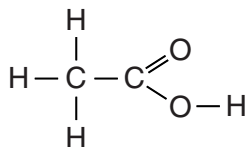
- Your quality of written communication is assessed in questions marked with a pencil (✎).
- The Periodic Table can be found on the back page.
- The number of marks is given in brackets [] at the end of each question or part question.
- The total number of marks for this paper is **75**.
- This document consists of **24** pages. Any blank pages are indicated.

Answer **all** the questions.

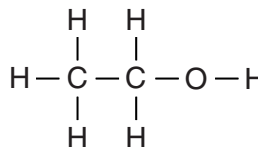
Section A – Module C1

- 1 This question is about carbon compounds.

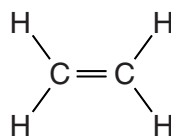
Look at the displayed formulas of some compounds.



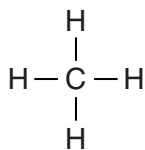
ethanoic acid



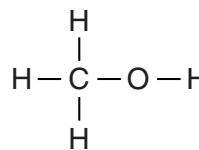
ethanol



ethene



methane



methanol

- (a) Methane is an **alkane**.

Explain how you can tell from the displayed formula.

..... [1]

- (b) Write down the name of a compound that is an **unsaturated** hydrocarbon.

Choose from the compounds shown.

..... [1]

- (c) Write down the **molecular formula** of ethanoic acid.

..... [1]

- (d) Ethene reacts with bromine, Br₂, to form dibromoethane, C₂H₄Br₂.

Write a **balanced symbol** equation for this reaction.

..... [1]

[Total: 4]

2 John and Sue are building a new house.



They want to choose the best fuel for their house.

They find out some information about four possible fuels.

fuel	is it easy to use?	annual cost to heat the house in £	is it available to this house?
coal	no	750	yes
LPG	yes	972	yes
natural gas	yes	720	no
oil	yes	750	yes

(a) Which fuel should John and Sue choose?

Explain your choice.

.....

.....

..... [2]

(b) LPG contains propane gas, C_3H_8 .

Write a **balanced symbol** equation for the complete combustion of propane in oxygen, O_2 .

..... [2]

[Total: 4]

3 This question is about paint and pigments.



(a) Emulsion paint is one type of paint.

Describe how emulsion paint dries.

.....

..... [1]

(b) Look at the table. It gives some information about pigments.

pigment	colour at 20 °C	colour at 100 °C	effect of light
A	blue	blue	colour fades
B	green	green	gives off light in the dark
C	blue	red	no change
D	yellow	yellow	no change

Which pigment would be useful on a kettle of boiling water?

.....

Explain your choice.

.....

..... [2]

(c) Paint is a **colloid**.

A colloid contains pigment particles mixed with particles of a liquid.

Explain why the pigment particles and liquid particles do not separate.

.....

.....

..... [2]

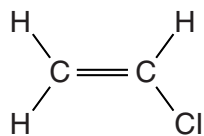
[Total: 5]

5 This question is about polymers.

(a) Poly(chloroethene) is a polymer.

Poly(chloroethene) is made from a monomer called chloroethene.

Look at the displayed formula of chloroethene.



Draw the displayed formula of poly(chloroethene).

[1]

(b) The plastic made from the polymer poly(chloroethene) can be used to make water pipes.



One property of poly(chloroethene) is that it is easy to shape.

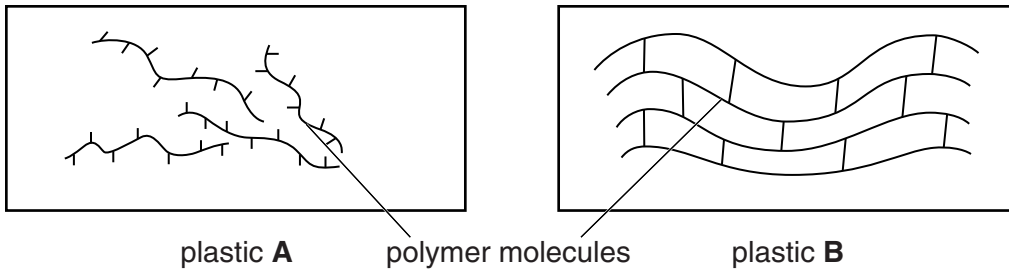
Write about **other** properties of poly(chloroethene) that make it suitable for making water pipes.

.....

.....

..... [2]

(c) Look at the diagrams. They show the structures of two plastics.



(i) Plastic **A** can be stretched easily.

Explain why.

.....
.....
.....
..... [2]

(ii) Plastic **B** has a high melting point.

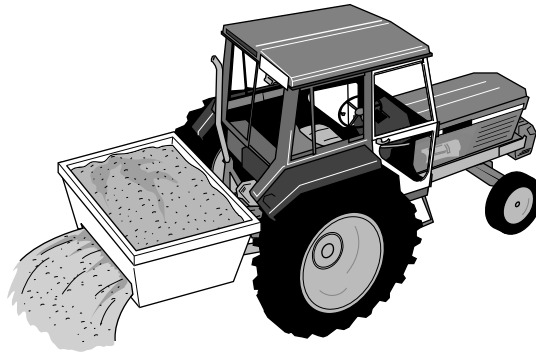
Explain why.

.....
..... [1]

[Total: 6]

Section B – Module C2

6 This question is about fertilisers.



Farmers use fertilisers to make crops grow bigger and faster. This increases crop yield.

(a) Explain how the use of fertilisers increases crop yield.

.....
.....
..... [2]

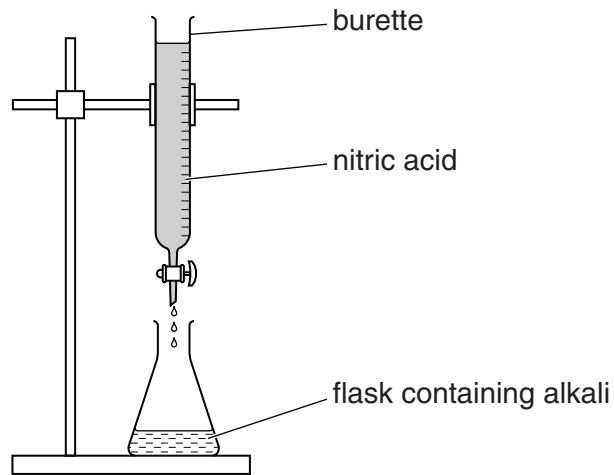
(b) Ammonium phosphate, $(\text{NH}_4)_3\text{PO}_4$, is used as a fertiliser.

Write down the total number of **atoms** in the formula $(\text{NH}_4)_3\text{PO}_4$.

answer [1]

(c) Chloe makes some potassium nitrate by neutralising an alkali with nitric acid.

Look at the diagram. It shows the apparatus she uses.



(i) Write down the **name** of the **alkali** Chloe uses to make potassium nitrate.

..... [1]

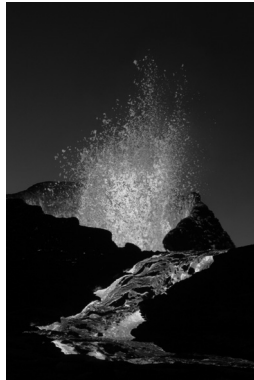
(ii) Chloe adds nitric acid to the flask until the solution is **neutral**.

Explain, using the ions involved, why the alkali is neutralised by nitric acid.

.....
 [1]

[Total: 5]

7 Look at the photograph of an erupting volcano.



(a) There were serious volcanic eruptions in many countries in 2010.

Many people's homes were destroyed.

Suggest why geologists did not predict all these eruptions.

.....
..... [1]

(b) In 1914, Wegener used evidence to propose his 'continental drift theory'.

In the late 1950s, this became part of a new theory called plate tectonics.

Today, the theory of plate tectonics is widely accepted by scientists.

Explain why.

.....
.....
..... [2]

[Total: 3]

9 This question is about industrial processes.

(a) An industrial process makes sulfur trioxide.

Sulfur dioxide, SO₂, reacts with oxygen, O₂.

Sulfur trioxide, SO₃, is made.

Write the **balanced symbol** equation for this reaction.

..... [2]

(b) A second industrial process makes an acid.

Look at the table. It shows the percentage yield of the acid made at different temperatures and pressures.

pressure in atmospheres	percentage yield at 200 °C	percentage yield at 400 °C	percentage yield at 600 °C
100	80%	22%	8%
200	92%	40%	14%
300	95%	56%	18%
400	96%	67%	22%

(i) How does **increasing** the **temperature** change the percentage yield?

..... [1]

(ii) A temperature of 400 °C, a pressure of 200 atmospheres and a catalyst are used to make the acid.

These conditions do not give the highest percentage yield.

Suggest why these conditions are chosen.

.....

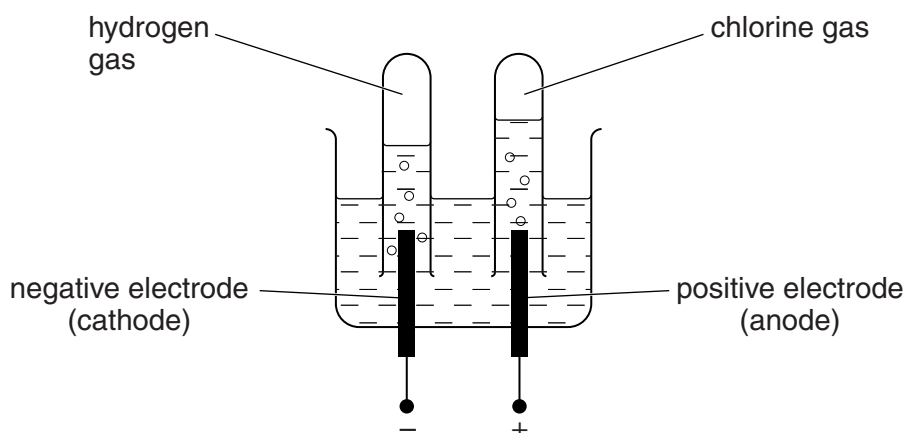
 [3]

[Total: 6]

10 Chlorine is made by the electrolysis of **concentrated** sodium chloride solution.

Sarah investigates this electrolysis.

Look at the apparatus she uses.



Sodium chloride solution contains Na^+ , OH^- , Cl^- and H^+ ions.

(a) At the positive electrode, chloride ions lose electrons to make chlorine gas, Cl_2 .

Write the **balanced ionic** equation for this reaction.

Use e^- to represent an electron.

..... [2]

(b) Look at the list of ions in sodium chloride solution.

Two ions do not react at the electrodes.

Write down the name of the solution these ions make.

..... [1]

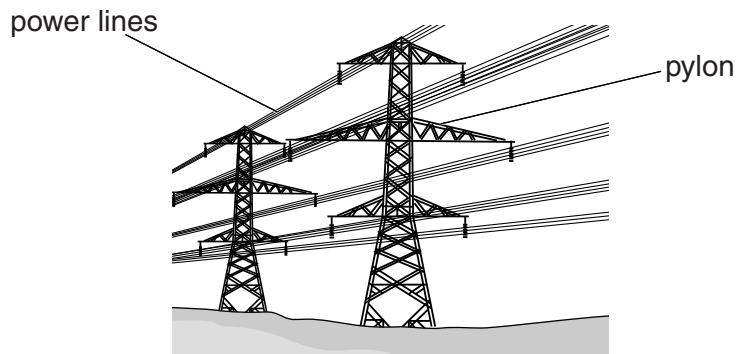
[Total: 3]

11 This question is about metals.

Look at the table. It shows the properties of two metals.

	aluminium	iron
density in g/cm ³	2.7	7.9
relative electrical conductivity	40	11
relative strength	70	210
cost per tonne in £	1350	400

Look at the picture of some power lines.



The power company makes the power lines from iron surrounded by aluminium.

Explain why the power company makes power lines from iron **and** aluminium.

Use information in the table.

.....

.....

.....

..... [2]

[Total: 2]

15
BLANK PAGE

Question 12 begins on page 16.

PLEASE DO NOT WRITE ON THIS PAGE

Section C – Module C3

12 Antacid tablets are used to stop indigestion.

Antacid tablets contain calcium carbonate, CaCO_3 .

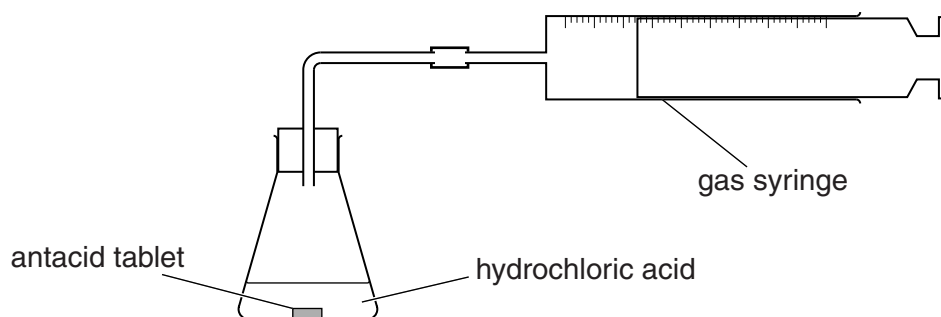
Jennie and Gary investigate the reaction of antacid tablets with hydrochloric acid.

Calcium chloride, CaCl_2 , water and carbon dioxide are made.

(a) Write a **balanced symbol** equation for this reaction.

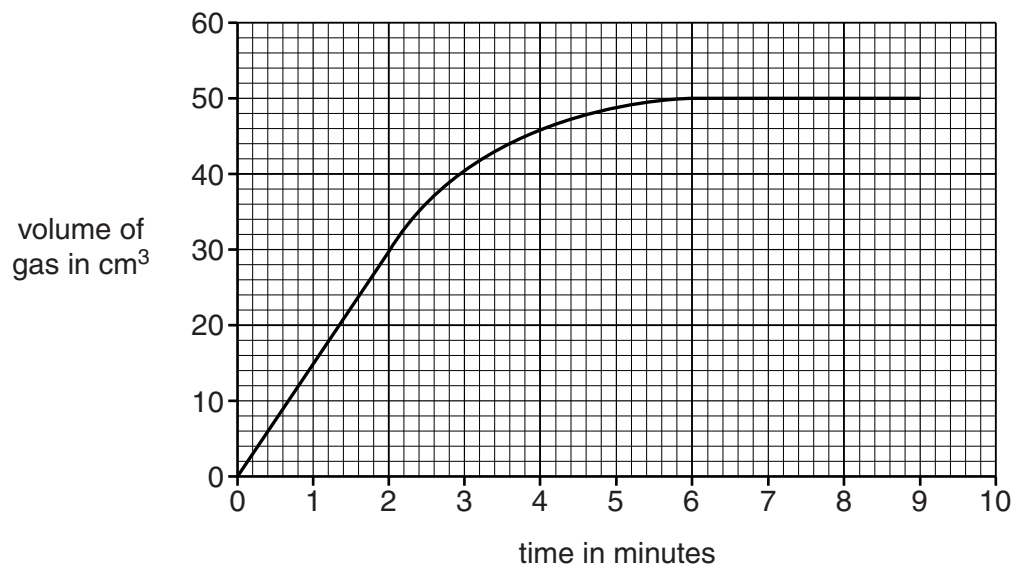
..... [2]

(b) Look at the diagram. It shows the apparatus they use.



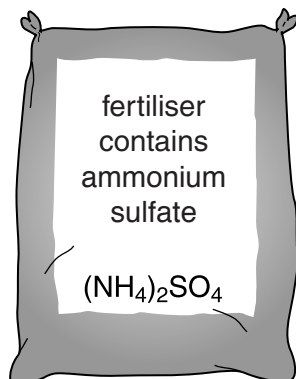
Jennie and Gary react an antacid tablet with 100 cm^3 of hydrochloric acid.

Look at the graph. It shows their results.



13 Fertilisers and medicines are useful chemicals.

Ammonium sulfate is used as a fertiliser.



Ammonium sulfate is made by reacting ammonia with dilute sulfuric acid.

The ammonia needed for this reaction is made in a **continuous** process.

This is different to the **batch** process used to make most medicines.

- (a) (i) A continuous process is used to make ammonia but a batch process is used to make most medicines.

Explain why.

.....

.....

..... [2]

- (ii) It is more expensive to make medicines than it is to make ammonium sulfate fertiliser.

Suggest why.

.....

..... [1]

- (b) Alex makes some ammonium sulfate in a laboratory.

- (i) Alex predicts he should make 8.0g of ammonium sulfate.

He actually makes 6.0g.

Show, by calculation, that his **percentage yield** of ammonium sulfate is 75%.

.....

.....

..... [2]

- (ii) The companies who make ammonium sulfate fertiliser on an industrial scale want as high a percentage yield as possible.

Explain why.

.....

.....

.....

..... [2]

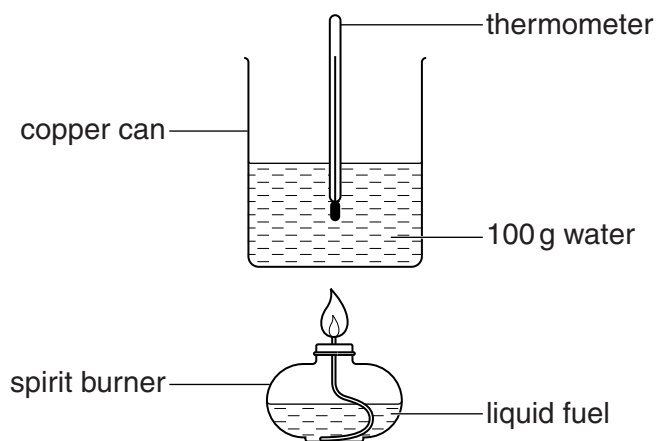
[Total: 7]

14 Stephanie is investigating some liquid fuels.

Stephanie investigates the energy given out by three different fuels.

Look at the diagram.

It shows the apparatus Stephanie uses.



Look at the table. It shows her results.

fuel	starting temperature of water in °C	final temperature of water in °C	temperature change in °C	mass of fuel burned in grams
paraffin	20	45	25	0.6
petrol	20	40	20	1.2
ethanol	18	48	30	1.8

(a) (i) Write down how Stephanie made her experiment a **fair test**.

..... [1]

(ii) Write down how Stephanie could **increase confidence** in her results.

..... [1]

(b) Look at the results for **paraffin**.

0.6 g of paraffin was used to heat 100 g of water.

Calculate the energy transferred **per gram** of paraffin.

Use the equation

$$\text{energy} = \text{mass} \times \text{specific heat capacity} \times \text{temperature change}$$

The specific heat capacity of water is 4.2 J/g °C.

Give your answer to **three** significant figures.

.....

.....

.....

.....

answer J/g [2]

(c) Stephanie decides to use paraffin in a camping stove, even though it is slightly more expensive per gram than ethanol or petrol.



Is this is a sensible choice? Use only the data in the table to explain your answer.

.....

.....

.....

.....

..... [2]

[Total: 6]

END OF QUESTION PAPER

BLANK PAGE

PLEASE DO NOT WRITE ON THIS PAGE

PLEASE DO NOT WRITE ON THIS PAGE



Copyright Information

OCR is committed to seeking permission to reproduce all third-party content that it uses in its assessment materials. OCR has attempted to identify and contact all copyright holders whose work is used in this paper. To avoid the issue of disclosure of answer-related information to candidates, all copyright acknowledgements are reproduced in the OCR Copyright Acknowledgements Booklet. This is produced for each series of examinations and is freely available to download from our public website (www.ocr.org.uk) after the live examination series.

If OCR has unwittingly failed to correctly acknowledge or clear any third-party content in this assessment material, OCR will be happy to correct its mistake at the earliest possible opportunity.

For queries or further information please contact the Copyright Team, First Floor, 9 Hills Road, Cambridge CB2 1GE.

OCR is part of the Cambridge Assessment Group; Cambridge Assessment is the brand name of University of Cambridge Local Examinations Syndicate (UCLES), which is itself a department of the University of Cambridge.

