

Please check the examination details below before entering your candidate information

Candidate surname

Other names

**Pearson Edexcel**  
**International**  
**Advanced Level**

Centre Number

--	--	--	--	--

Candidate Number

--	--	--	--	--

**Wednesday 23 January 2019**

Morning (Time: 1 hour 30 minutes)

Paper Reference **WBI06/01**

**Biology**

**Advanced**

**Unit 6: Practical Biology and Investigative Skills**

**You must have:**

Calculator, HB pencil, ruler

Total Marks

## Instructions

- Use **black** ink or ball-point pen.
- **Fill in the boxes** at the top of this page with your name, centre number and candidate number.
- Answer **all** questions.
- Answer the questions in the spaces provided  
– *there may be more space than you need.*

## Information

- The total mark for this paper is 50.
- The marks for **each** question are shown in brackets  
– *use this as a guide as to how much time to spend on each question.*
- You will be assessed on your ability to organise and present information, ideas, descriptions and arguments clearly and logically, including your use of grammar, punctuation and spelling.
- Candidates may use a calculator.

## Advice

- Read each question carefully before you start to answer it.
- Keep an eye on the time.
- Try to answer every question.
- Check your answers if you have time at the end.

Turn over ►

P54684A

©2019 Pearson Education Ltd.

1/1/1



Pearson

**Answer ALL questions.**

- 1 Zinc is an essential mineral for the growth of plants.

The photograph below shows a young maize plant, *Zea mays*, growing in soil with a deficiency of zinc.



Magnification  $\times 1$

The maize plants growing in this soil develop yellow stripes along each leaf and the stems are short.

The stems are short because there is a reduced distance between each leaf.

DO NOT WRITE IN THIS AREA

DO NOT WRITE IN THIS AREA

DO NOT WRITE IN THIS AREA





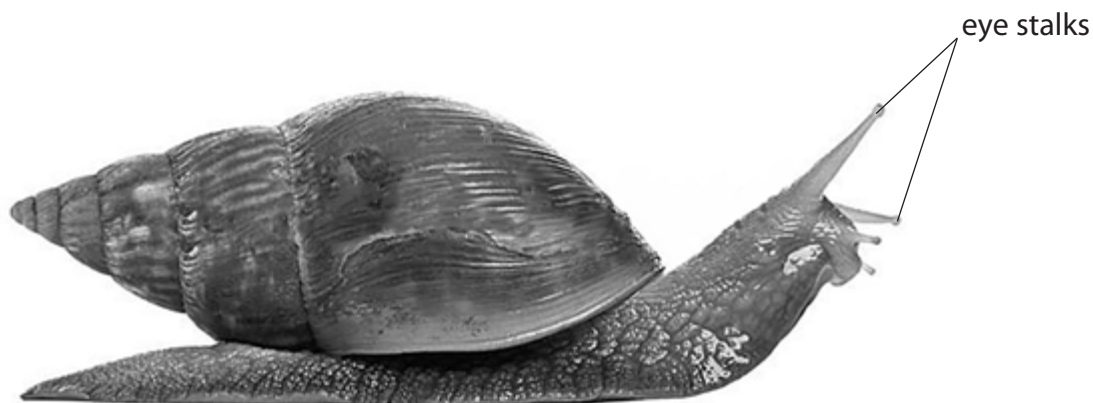


DO NOT WRITE IN THIS AREA

DO NOT WRITE IN THIS AREA

DO NOT WRITE IN THIS AREA

2 The photograph below shows a giant African land snail, *Achatina fulica*.



Magnification  $\times 1$

A student investigated the response of this snail to touch.

When the head of the snail was touched between the eye stalks, the snail responded by withdrawing into its shell.

The student recorded the time for the snail to re-emerge from its shell and extend its eye stalks.

The snail was touched 11 times. The time for the snail to re-emerge was recorded after each touch.

The investigation was repeated with two more snails.



Some of the results of this investigation are shown below.

*Snail A*

*First touch 74 seconds*

*Third touch 55 seconds*

*Fifth touch 34 seconds*

*Seventh touch 38 seconds*

*Ninth touch 10 seconds*

*Eleventh touch 5 seconds*

*Snail B*

*First touch 74 seconds*

*Third touch 55 seconds*

*Fifth touch 34 seconds*

*Seventh touch 38 seconds*

*Ninth touch 10 seconds*

*Eleventh touch 4 seconds*

*Snail C*

*First touch 62 seconds*

*Third touch 47 seconds*

*Fifth touch 30 seconds*

*Seventh touch 30 seconds*

*Ninth touch 16 seconds*

*Eleventh touch 10 seconds*



DO NOT WRITE IN THIS AREA

DO NOT WRITE IN THIS AREA

DO NOT WRITE IN THIS AREA

(a) Write a suitable null hypothesis for this investigation.

(2)

.....

.....

.....

.....

(b) Calculate the mean time for re-emergence for each touch.

Prepare a table to display the **raw data** and your calculated **mean** for each touch.

(3)



DO NOT WRITE IN THIS AREA

DO NOT WRITE IN THIS AREA

DO NOT WRITE IN THIS AREA

**BLANK PAGE**





DO NOT WRITE IN THIS AREA

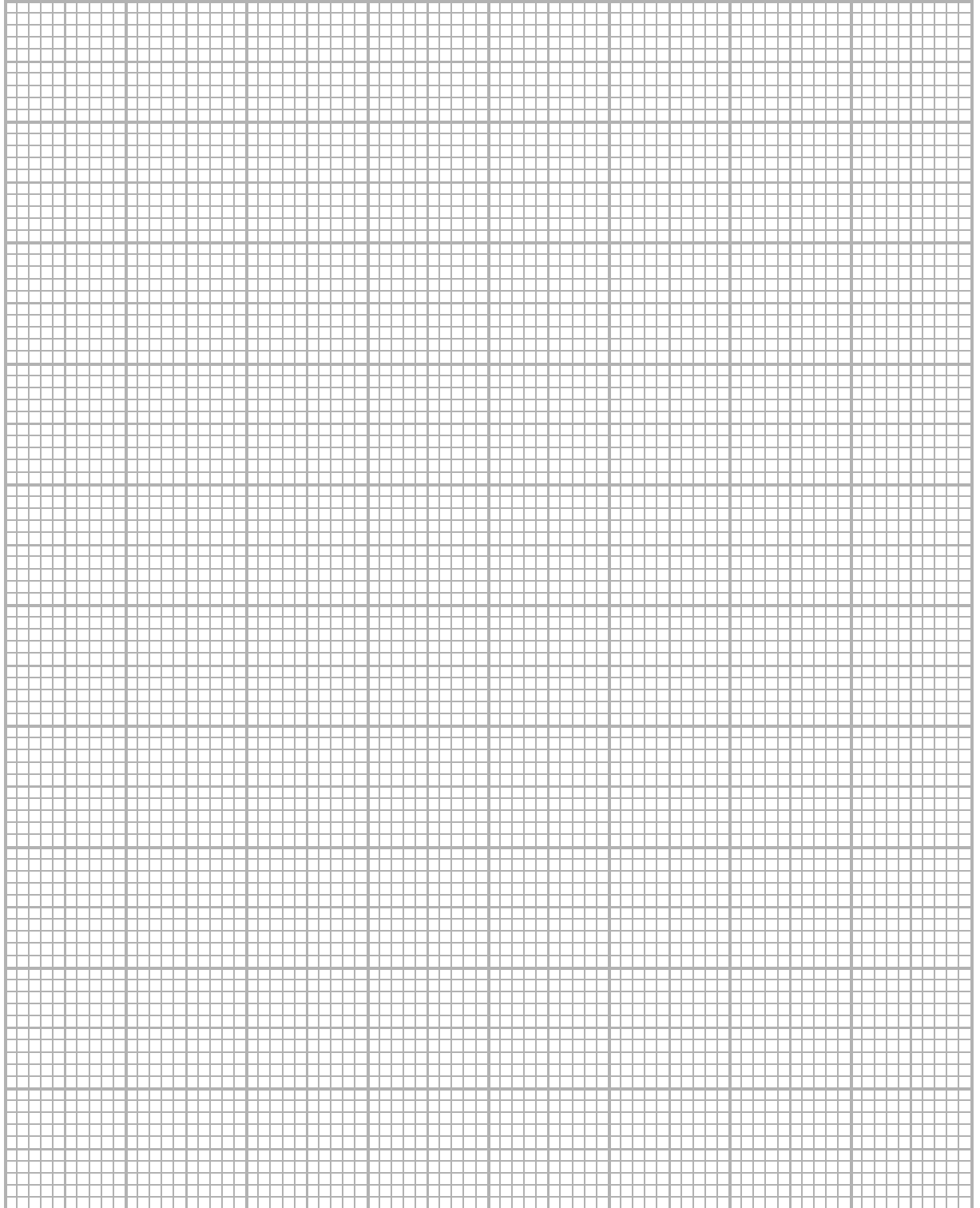
DO NOT WRITE IN THIS AREA

DO NOT WRITE IN THIS AREA

(c) On the graph paper below, draw a bar graph to show the mean time for re-emergence for each touch.

Include an indication of the variability of the data.

(3)



(d) The student applied a rank correlation test to the data.

The student obtained a rank correlation,  $r$ , of  $-0.935$ .

The significance values for this rank correlation are shown in the table.

<b>Significance level (<math>p</math>)</b>	0.1	0.05	0.01	0.005
<b>Critical value of <math>r</math></b>	0.338	0.427	0.582	0.632

What conclusion can be drawn from this investigation?

Use your graph and the information in the table to explain your answer.

(4)

.....

.....

.....

.....

.....

.....

.....

.....

.....

.....

.....

.....

.....

.....

.....

.....

.....

.....

.....

.....

.....



(e) Suggest why it may **not** be reasonable to draw valid conclusions from the results of this investigation.

(4)

.....

.....

.....

.....

.....

.....

.....

.....

.....

.....

.....

.....

.....

.....

.....

.....

.....

.....

.....

.....

.....

**(Total for Question 2 = 16 marks)**

DO NOT WRITE IN THIS AREA

DO NOT WRITE IN THIS AREA

DO NOT WRITE IN THIS AREA



- 3 When scientists genetically modify a plant to contain a useful gene, they usually produce clones of the plant for further testing and evaluation.

Plant tissue culture can be used to grow a large number of clones from small pieces of plant tissue.

Plant growth regulators, such as auxin (IAA), are used to control the growth of plant tissue.

A student formed the following hypothesis.

*The greater the concentration of plant growth regulator, the faster the rate of growth of the plant tissue.*

Plan an investigation that you could carry out to support or reject this hypothesis.

Your answer should give details under the following headings.

- (a) A consideration of whether there are any safety issues you would need to take into account.

(2)

.....

.....

.....

.....

.....

.....



(b) Suggestions for preliminary practical work that you might undertake to ensure your proposed method would provide meaningful data.

(3)

DO NOT WRITE IN THIS AREA

DO NOT WRITE IN THIS AREA

DO NOT WRITE IN THIS AREA

Area with horizontal dotted lines for writing.



(c) A detailed method, including an explanation of how important variables are to be controlled or monitored.

(10)

*[2 marks are available in this section for the quality of written communication.]*

Area with horizontal dotted lines for writing.

DO NOT WRITE IN THIS AREA

DO NOT WRITE IN THIS AREA

DO NOT WRITE IN THIS AREA



DO NOT WRITE IN THIS AREA

DO NOT WRITE IN THIS AREA

DO NOT WRITE IN THIS AREA

Large writing area with horizontal dotted lines.



P 5 4 6 8 4 A 0 1 5 2 0

(d) A clear explanation of how your data are to be recorded, presented and analysed in order to draw conclusions from your investigation.

(4)

.....

.....

.....

.....

.....

.....

.....

.....

.....

.....

.....

.....

.....

.....

.....

.....

.....

.....

.....

.....

.....

.....

.....

DO NOT WRITE IN THIS AREA

DO NOT WRITE IN THIS AREA

DO NOT WRITE IN THIS AREA





DO NOT WRITE IN THIS AREA

DO NOT WRITE IN THIS AREA

DO NOT WRITE IN THIS AREA

(e) The limitations of your proposed method.

(3)

Area with horizontal dotted lines for writing the answer to part (e).

**(Total for Question 3 = 22 marks)**

**TOTAL FOR PAPER = 50 MARKS**



DO NOT WRITE IN THIS AREA

DO NOT WRITE IN THIS AREA

DO NOT WRITE IN THIS AREA

**BLANK PAGE**



DO NOT WRITE IN THIS AREA

DO NOT WRITE IN THIS AREA

DO NOT WRITE IN THIS AREA

**BLANK PAGE**



DO NOT WRITE IN THIS AREA

DO NOT WRITE IN THIS AREA

DO NOT WRITE IN THIS AREA

**BLANK PAGE**

Every effort has been made to contact copyright holders to obtain their permission for the use of copyright material. Pearson Education Ltd. will, if notified, be happy to rectify any errors or omissions and include any such rectifications in future editions.

